



**Naval Facilities Engineering Systems Command,  
Marianas**  
PSC 455, Box 195  
FPO AP 96540-2937

**MILITARY RELOCATION TO GUAM AND CNMI  
PROGRAMMATIC AGREEMENT (PA) MEMO #1**

<b>Project:</b> REVISED - J-017-V Waterline Interconnect DESIGN STUDIES	<b>Date:</b> March 7, 2023 <b>Comment Period Open Until:</b> April 21, 2023
<b>Project Location:</b> Marine Corps Base Camp Blaz (MCBCB), Finegayan, Guam	<b>Prepared By:</b> NAVFAC Pacific
<b>PROJECT SUMMARY:</b>	
<p>This PA Memo is being resubmitted as the design for the waterline has been re-routed. This revised submittal supports design studies for a proposed interconnected waterline and upgrades to an existing pump facility, a potential new pump facility, and potable water mains to connect existing water wells and a water tank in support of water infrastructure at Marine Corps Base Camp Blaz (MCBCB), Finegayan, Guam.</p>	
<p>This project was identified after preparation of the Final Environmental Impact Study (FEIS) for the military relocation to Guam and the Commonwealth of the Northern Mariana Islands (CNMI) and Appendix E under various projects of the 2011 Programmatic Agreement (PA) among the Department of Defense, the Advisory Council on Historic Preservation, the Guam State Historic Preservation Officer, and the Commonwealth of the Northern Mariana Islands State Historic Preservation Officer Regarding the Relocation to the Islands of Guam and Tinian.</p>	
<p>In accordance with Stipulation IV.E.2.a., this PA Memo presents information to allow the Guam State Historic Preservation Officer (SHPO) and the public to provide comments on the identification and evaluation of historic properties and the finding of effects.</p>	
<b>PROJECT LOCATION:</b>	
<p>J-017-V is located in northwestern Guam, west of Route 3 and south of the Northwest Field of Andersen Air Force Base at Navy Computer and Telecommunications Station, Finegayan, Guam. (Figure 1). The Area of Potential Effect (APE), is partially located within the J-001B Utilities and Site Improvements (U&amp;SI) project area.</p>	
<p>The project area is on the limestone plateau above the western cliffs of northern Guam. The majority of the interior of the island is comprised of Mariana Limestone, and the southern part of the island is underlain mostly by volcanic rock.</p>	

**1** This PA Memo is required by Stipulation IV.E.2.a. of the PA as a means for interested members of the public to provide comments on the identification and evaluation of historic properties. Stipulation IV.E.1.b. of the 2011 PA requires the DoD to take into account comments received within 45 days of the date of the delivery of this PA memo to the SHPO and public notification via the CRI website.

The project area is located within the village or municipality of Dededo. Although the general area is now commonly referred to as Finegayan or North Finegayan, its pre-World War II name was Machanao.

The APE measures 10.80 hectares (26.7 acres).

**PROJECT DESCRIPTION:**

The proposed project includes design studies for an interconnected waterline and upgrades to existing infrastructure to support a new water system. The water system will upgrade an existing pump facility, a potential new pump facility, and potable water mains to connect existing water wells and a water tank. As well as, power and communications systems, emergency backup generator, Supervisory Control and Data Acquisition system, and other accessories and appurtenances necessary for proper operation.

Project design study efforts will include topographical surveys and geotechnical surveys. These tasks may require test pits, geotechnical borings of varying depths, mechanized excavation, placement of survey markers, and other ground disturbing activities. The geotechnical field investigation generally entails drilling exploratory borings with a truck-mounted drill rig using 8-inch diameter augers or pipe casing with water or air rotary drilling methods. Exploratory boring depths will vary, but range from 13 –115 feet (4 – 35 meters). The samples are collected for laboratory analysis.

**IDENTIFICATION OF HISTORIC PROPERTIES:**

The 2011 PA describes the overall efforts taken to identify historic properties in Stipulation IV, including archival research, oral studies, and interviews. Archaeological surveys have been conducted for the vast majority of the J-017-V project-specific APE. Enclosure 1 is list of references for identification efforts in and near the APE. Regulation does not require survey of an entire APE or identification of all historic properties, and 36 CFR Part 800.4(b)(1) states that a reasonable and good faith effort to carry out appropriate identification efforts shall be made. The 2011 PA directs the PA Memo process to allow for members of the public to provide input on the identification and evaluation of historic properties. The input sought includes knowledge on specific historic properties not yet identified by previous efforts, and assistance in identifying issues relating to effects on historic properties.

Figure 2 illustrates the scope of survey efforts to identify historic properties. Archaeological studies identified the presence of historic properties in the J-001B project area. The J-001B U&SI project mitigated adverse effects to historic properties as stipulated in the 2011 PA. Subsequently, the 2018 resolution agreement between the Navy and Guam SHPO implemented monitoring and archaeological investigation for discoveries identified during J-001B U&SI activities. The historic properties present within the J-001B U&SI project will no longer be extant once mitigation is complete (i.e., qualifying characteristics will have been altered and the integrity diminished).

**2** This PA Memo is required by Stipulation IV.E.2.a. of the PA as a means for interested members of the public to provide comments on the identification and evaluation of historic properties. Stipulation IV.E.1.b. of the 2011 PA requires the DoD to take into account comments received within 45 days of the date of the delivery of this PA memo to the SHPO and public notification via the CRI website.

In accordance with Stipulation VI.F. of the PA, the DoD has retained a full-time archaeologist to provide site checks, oversee coordination and execution of the archaeological mitigation measures in the PA and to provide quality control. The 2018 Resolution Agreement also requires the Department of the Navy (DON) to notify the Guam SHPO of any new discoveries and evaluate these discoveries to assess effects.

**FINDING OF EFFECTS:**

The DON proposes a finding of no historic properties affected as there are no historic properties in the APE. Previously identified NRHP eligible sites have been mitigated per requirements under PA Memo #2 for J-001B Utilities and Site Improvements Phase I dated December 9, 2014) and are no longer eligible for listing to the NRHP.

Due to the overlap and proximity to J-001B U&SI project area, work occurring in areas not previously monitored during J-001B U&SI initial ground disturbance will be archaeologically monitored consistent with the 2018 Resolution Agreement. A previously approved work plan for the J-001B area will support the monitoring effort. The monitor’s objective will be to identify and document cultural deposits that may represent a historic property and/or human skeletal remains, including fragmented bone encountered as an isolated find. The monitor shall record subsurface stratigraphy, cultural deposits and archaeological features, collect diagnostic artifacts, and collect global positioning system (GPS) data. Standardized daily monitoring logs shall include all relevant archaeological observations.

In the event of a post review discovery the DON will follow the procedures outlined in Stipulation XI of the 2011 PA. If comments received during the PA Memo process result in new information regarding historic properties, consultation will continue pursuant to the 2011 PA. Otherwise, PA Memo #2 will not be required as there will be no mitigation proposed for design studies.

---

**3** This PA Memo is required by Stipulation IV.E.2.a. of the PA as a means for interested members of the public to provide comments on the identification and evaluation of historic properties. Stipulation IV.E.1.b. of the 2011 PA requires the DoD to take into account comments received within 45 days of the date of the delivery of this PA memo to the SHPO and public notification via the CRI website.

## Enclosure 1

Athens, J.S.

2009 *Final Archaeological Surveys and Cultural Resources Studies on Guam and the Commonwealth of the Northern Mariana Islands in Support of the Joint Guam Build-Up Environmental Impact Statement Volume I: Guam*. Prepared by International Archaeological Research Institute, Inc. Honolulu, HI.

Church, M.K., J.H. Hokanson, J.D. Gallison, and M.H. Jennings

2009 *Cultural Resources Survey of 297 Acres at Andersen Air Force Base, Guam, Contract Number F41924-03-D-8599, Task Order 0031*. Prepared for David T. Lotz, Environmental Flight, Andersen Air Force Base, Guam. e2M Engineering Environmental Management, Inc., Englewood, Colorado.

Dixon, B. and S. Walker

2011 *Cultural Resource Investigations Conducted in the Territory of Guam Supporting the Joint Guam Build-Up Environmental Impact Statement: Final Archaeological Surveys on Guam 2009 at Proposed Utility Sites, Harmon Property, and Andersen AFB*. Prepared for Naval Facilities Engineering Command, Pacific Division, Pearl Harbor, Hawaii. TEC Inc., Honolulu, Hawaii.

Dixon, Boyd, S. Walker and R. Schaefer

2011 *Final Report Cultural Resource Investigations Conducted in the Territory of Guam Supporting the Joint Guam Build-Up Environmental Impact Statement: Final Archaeological Surveys on Guam 2010 on Andersen AFB*. Prepared by the Naval Facilities Engineering Command, Pacific Division, by TEC Inc.

Dixon, B., T. Rudolph, A. Jalandoni, I. Nelson, M. Hroncich-Conner, S. Leary, R. Schaefer, E. Lash, M. Todd

2015 *Proposed Guam and CNMI Military Relocation 2012 Roadmap Adjustments SEIS Live-Fire Training Range Complex Footprints, Main Cantonment, Utilities, Communications, Well Field Alternatives and Access Route Options Volume I: Potential Direct Impact Area In-Fill Cultural Resources Study Narrative*. Prepared for Naval Facilities Engineering Command Pacific, Pearl Harbor, Hawaii. Cardno TEC, Inc., Honolulu, Hawaii.

---

**4** This PA Memo is required by Stipulation IV.E.2.a. of the PA as a means for interested members of the public to provide comments on the identification and evaluation of historic properties. Stipulation IV.E.1.b. of the 2011 PA requires the DoD to take into account comments received within 45 days of the date of the delivery of this PA memo to the SHPO and public notification via the CRI website.

Haun, Alan E.

1988 *Archaeological Reconnaissance Survey and Field Inspections of Relocatable Over-the-Horizon Radar Sites on Guam, Mariana Islands, Micronesia*. Prepared for Wilson Okamoto and Associates, Inc., Paul H. Rosendahl, Ph.D., Inc. Hilo, HI.

Hokanson, Jeffrey H., J. David Kilby, Michael Church and Mary R. McCurdy

2008 *Cultural Resources Survey for a Perimeter Fence and Portions of the Munitions Storage Area, Andersen Air Force Base, Guam*. Prepared for Andersen Air Force Base. Engineering-environmental Management, Inc., Englewood, Colorado.

Kurashina, H., D. Wooster, T. McGrath, and J. Toenjes

1988 *Archaeological Investigations of the Route 3 Road Corridor, Territory of Guam, Mariana Islands*. Prepared for Juan Tenorio and Associates, Inc. Agana, Guam.

Mohlman, Geoffrey

2015 *Final Report Historic Inventory Survey Andersen Air Force Base, Territory of Guam*. Prepared for NAVFAC Marianas by Southeastern Archaeological Research, Inc.

Pacheco, T., T. Rieth, and R. DiNapoli

2020 *Archaeological Monitoring in Support of Finegayan Utilities and Site Improvements Phase I, Naval Computer and Telecommunications Station, Guam*. 4 Volumes. Prepared for Department of the Navy, Pacific Division, Naval Facilities Engineering Command, Pearl Harbor, Hawaii. International Archaeological Research Institute, Inc., Honolulu, Hawaii.

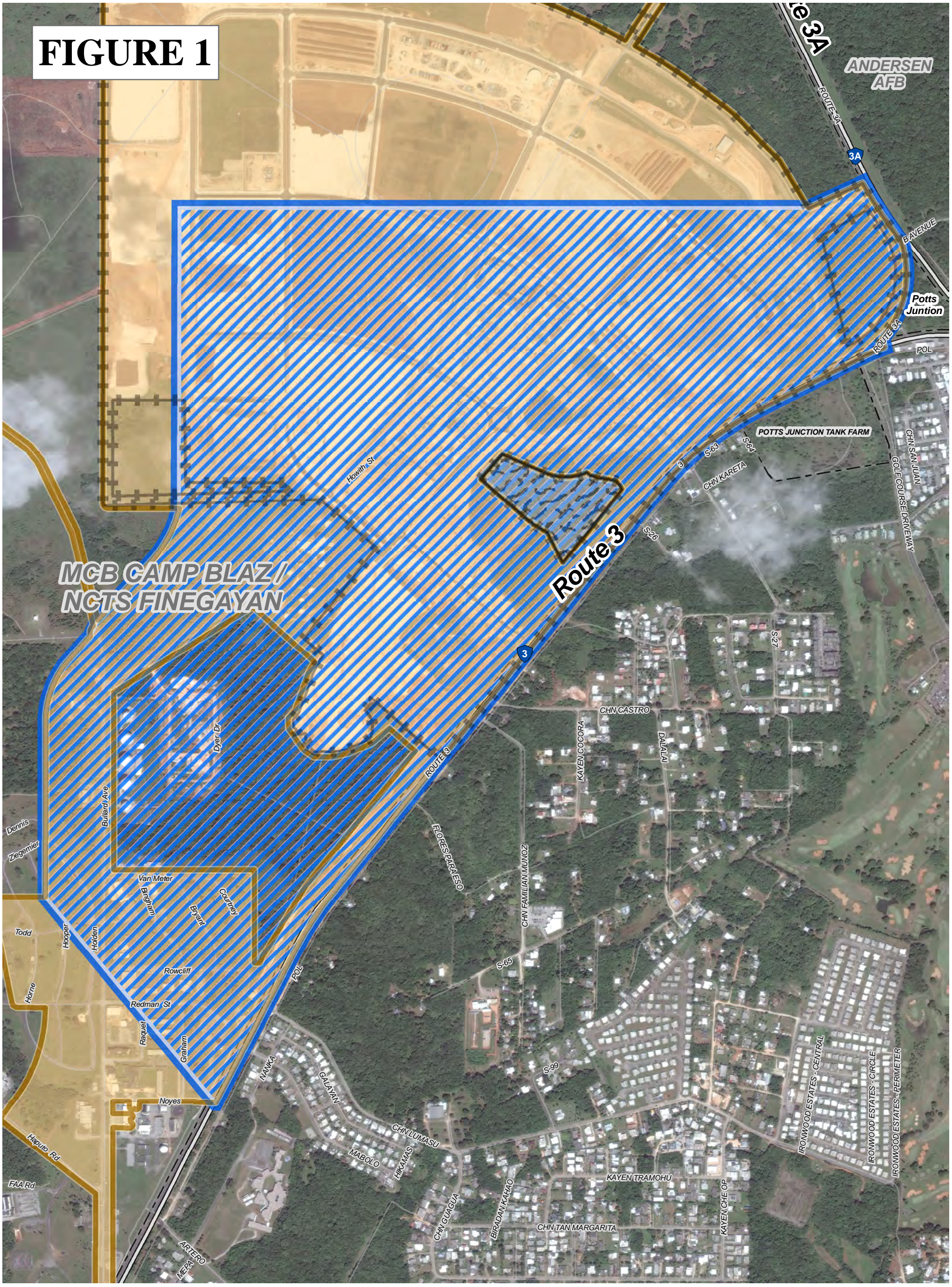
Welch, David J.

2010 *Archaeological Surveys and Cultural Resources Studies on the Island of Guam in Support of the Joint Guam Build-Up Environmental Impact Statement VOLUME I: NARRATIVE. Contract N62742-06-D-1870, Contract Task Order No. 0010*. Prepared for Department of the Navy, Naval Facilities Engineering Command, Pacific Pearl Harbor, Hawai'i

Yee et al 2004 Yee, S., D. Welch, and J. Allen

2004 *Archaeological Overview Survey Report for Andersen Air Force Base, Guam*. Prepared for 36 CES/CEVN, AAFB, Guam and Earth Tech, Inc., Honolulu, HI. Prepared by International Archaeological Research Institute, Inc. Honolulu, HI.

# FIGURE 1



**MCB CAMP BLAZ /  
NCTS FINEGAYAN**

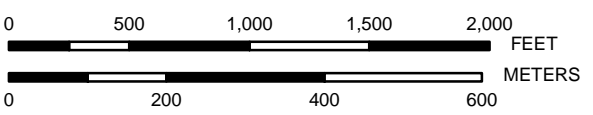
**Route 3**

**ANDERSEN  
AFB**

**Potts  
Junction**

**POTTS JUNCTION TANK FARM**

**Camp Blaz - J-017-V, Waterline Interconnect  
- PA Memo - Construction Area**










PREPARED BY:  
Naval Facilities Engineering Command Pacific Division  
Guam Program Management Office

DATE: 02 Mar 2023



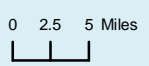
Coordinate System: Geographic  
Projection: N/A  
Datum: D WGS 1984

**Legend**

-  J-017-V Waterline Interconnect - APE
-  J-001B (U&SI) Contract Limits
-  Sinkhole area not included in the J-001B PA memo (per the 2017 PA memo)
-  Guam Hwys.
-  PA Memo Area
-  Military Installations
-  J-001B (2014, 2017, 2021)

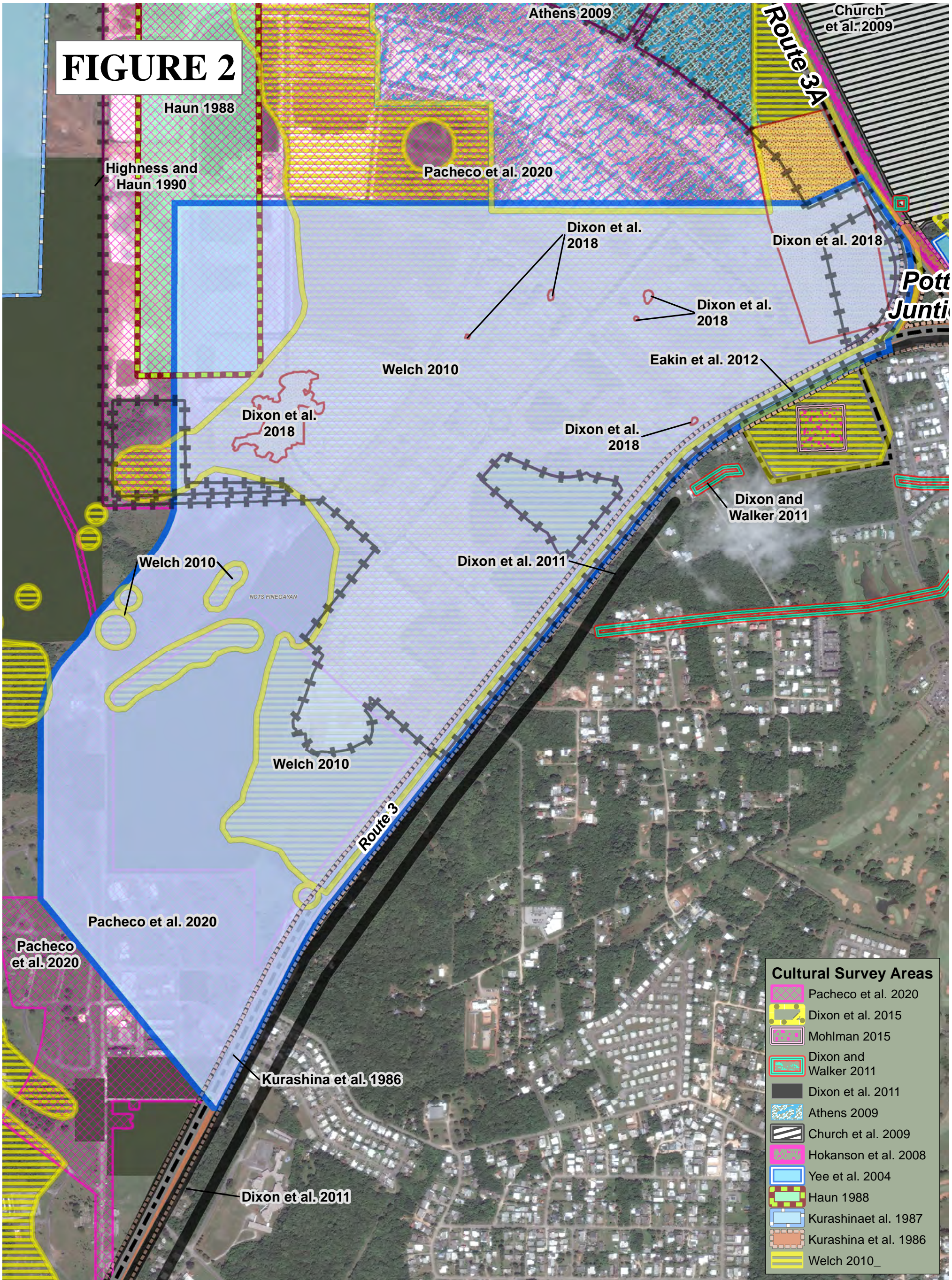
This figure depicts the overall project location. The actual size of the APE is 26.7 acres as described in the text of this PA memo.

**MAMIZU APE  
J017-V - 26.7 ac.**



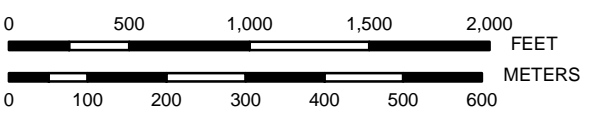
Date: 3/2/2023 Time: 10:07:18 AM Path: C:\Users\laaron.pulliam\OneDrive - US Navy\flankspeed\Documents\GIS Projects\WXDa\Finegayan\EVPA\J-017-VPA\_MEMO\_CampBlaz\_J-017-V\_Waterline Interconnect\_GSHPO - Figure 3.mxd

# FIGURE 2



Cultural Survey Areas	
[Pink grid pattern]	Pacheco et al. 2020
[Yellow grid pattern]	Dixon et al. 2015
[Purple grid pattern]	Mohlman 2015
[Red and green grid pattern]	Dixon and Walker 2011
[Black solid fill]	Dixon et al. 2011
[Blue and white grid pattern]	Athens 2009
[Black and white diagonal lines]	Church et al. 2009
[Pink solid fill]	Hokanson et al. 2008
[Light blue solid fill]	Yee et al. 2004
[Green and yellow grid pattern]	Haun 1988
[Light blue grid pattern]	Kurashina et al. 1987
[Brown grid pattern]	Kurashina et al. 1986
[Yellow and black grid pattern]	Welch 2010

**Camp Blaz - J-017-V, Waterline Interconnect - PA Memo - Survey Areas**



PREPARED BY:  
 Naval Facilities Engineering Command Pacific Division  
 Guam Program Management Office

DATE: 02 Mar 2023



Coordinate System: UTM Zone 55 North  
 Projection: Transverse Mercator  
 Datum: D WGS 1984

**Legend**

- J-017-V Waterline Interconnect - APE
- J-001B (U&SI) Contract Limits
- Military Installations

This figure depicts the overall project location. The actual size of the APE is 26.7 acres as described in the text of this PA memo.



# Military Relocation PA Memo Comment Form

2023

If submitting via **e-mail**, scan and send to: [criwebcomment@navy.mil](mailto:criwebcomment@navy.mil)

If submitting via **postal mail**, send to:

Attn: CRI Web Comments  
Code EV23, NAVFAC Pacific  
258 Makalapa Drive, Suite 100  
JBPHH, Hawaii 96860-3134

Submitted comments will be posted on the Navy's Cultural Resources Information (CRI) web site. Information presented on the CRI web site is considered public. The sections highlighted in **red** are required to be completed in order for a comment to be posted.

## Privacy Act Statement

Personal information will only be used to contact you regarding the comments you submit. This information will only be shared with another government agency if your inquiry relates to that agency, or as otherwise required by law. We will not create individual profiles or give your information to any private organization. While you must provide a valid e-mail address or postal address, please **DO NOT** include personally identifying information such as a social security number.

By submitting this comment form, you agree not to include content that is offensive in nature, such as profanity, personal attacks on individuals, and racist or abusive language.

**PROJECT: J-017-V Waterline Interconnect DESIGN Studies**

**SUBJECT: PA Memo#1 REVISED**

**Date:** \_\_\_\_\_

**Name:** \_\_\_\_\_

**CRI User Name** (if you don't want your real name to be posted with your comment on the CRI web site):

\_\_\_\_\_

**E-Mail Address:** \_\_\_\_\_

**and/or**

**Postal Mail Address:** \_\_\_\_\_

**COMMENTS:** \_\_\_\_\_

\_\_\_\_\_

\_\_\_\_\_

\_\_\_\_\_

\_\_\_\_\_

\_\_\_\_\_



